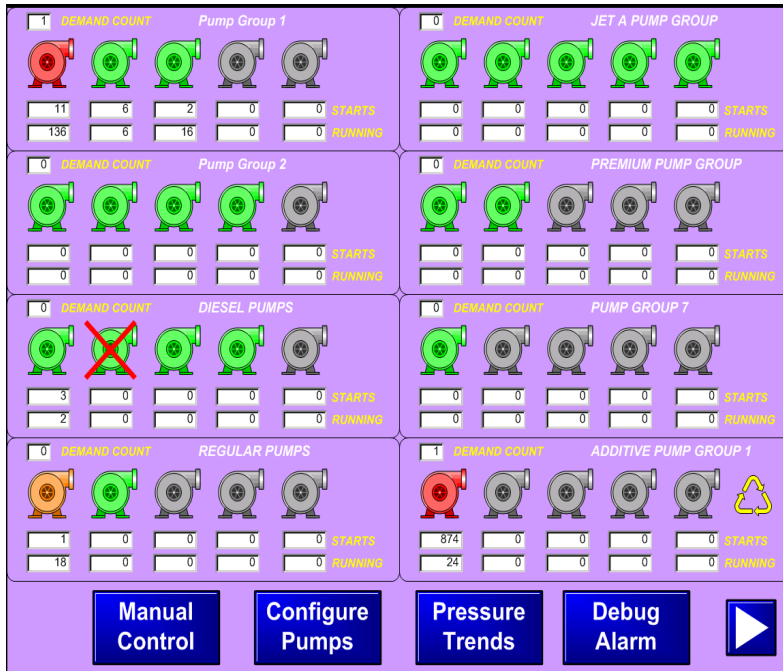
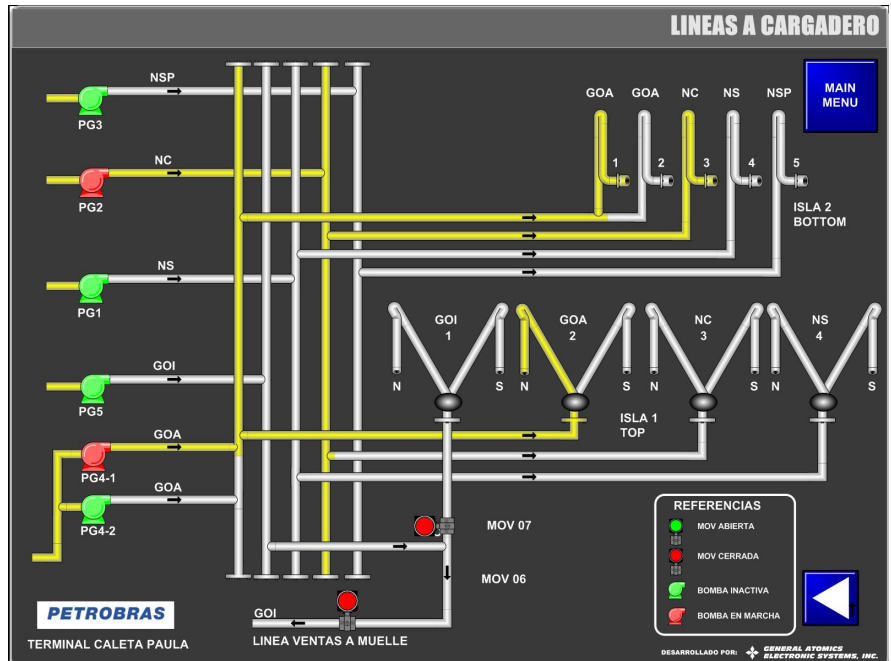


PumpControl



The PumpControl system was introduced as a member of the General Atomics Electronic Systems family of terminal automation systems (TAS) in 2004. It was designed to be a flexible, scalable, and user-friendly pump control system. It can be easily integrated with Terminal Automation System through the network or hard wire pump demands from any other electronic preset devices (i.e. Accuload, Brooks, Danload). Its design allows both the hardware and software platform to easily communicate with other computer systems through OPC compliant communications.

- Flexible Operations
- Expandable configurations
- Configurable 5 step staging
- Pump start, stop and sequence configurable delay timers
- Automatic or manual pump stage rotation
- Automatic and configurable pump re-circulation feature
- Analog line pressure trend monitoring
- Touch Screen HMI interface
- Supplied with standard or custom enclosures



ILTA Supplier Patron – a General Atomics company

4949 GREENCRAIG LANE, SAN DIEGO, CA 92123-1675 *
(858) 522-8300 * FAX (858) 522-8339