

CAPACITOR SPECIFICATION

PART NUMBER: **450PM970M**

<u>PARAMETER</u>	<u>VALUE</u>	<u>UNITS</u>	<u>Q.A.</u>	<u>METHOD</u>
CAPACITANCE:	0.007	uF	100%	120 Hz, R.T.*
TOLERANCE:	+10 , -10	%		
RATED VOLTAGE:	50.0	kV		
TEST VOLTAGE:	85.0	kV	100%	60 sec HIPOT
RATED ENERGY:	8.75	Joules		
RATED VOLTAGE REVERSAL:	20	%		
MAX. VOLTAGE REVERSAL:	90	%		
MAX. PEAK CURRENT:	25	kA		
MAX. CONTINUOUS REP RATE:	100	pps		
MAX. RMS CURRENT	20	Amps		
MAX. OPERATING TEMP.	65	°C		
MIN. OPERATING TEMP.	-30	°C		
DESIGN LIFE AT RATED:	3.0E+09	charge / discharge cycles		
DC LIFE:	1.00E+05	hours		
RELIABILITY AT LIFE:	90	%		
MAX. DISSIPATION FACTOR	0.20	%	100%	120 Hz, R.T.*
APPROX. INDUCTANCE	20	nH	SAMPLE	STANDING WAVE
MIN. INSULATION RESISTANCE	1000	Mohm-uF	SAMPLE	DECAY Vr / R.T.* / 120s / 120s
CASE STYLE:	DOUBLE ENDED PLASTIC			
BUSHING:	FEMALE ELECTRODE			
ELECTRODE STUD:	2ea M6 x 1.0, 7mm Deep			
DIMENSIONS:	2.3 x 5.9 x 5.00	inches		
	58 x 150 x 127	mm		
WEIGHT:	3.3	lbs		
	1.5	kg		

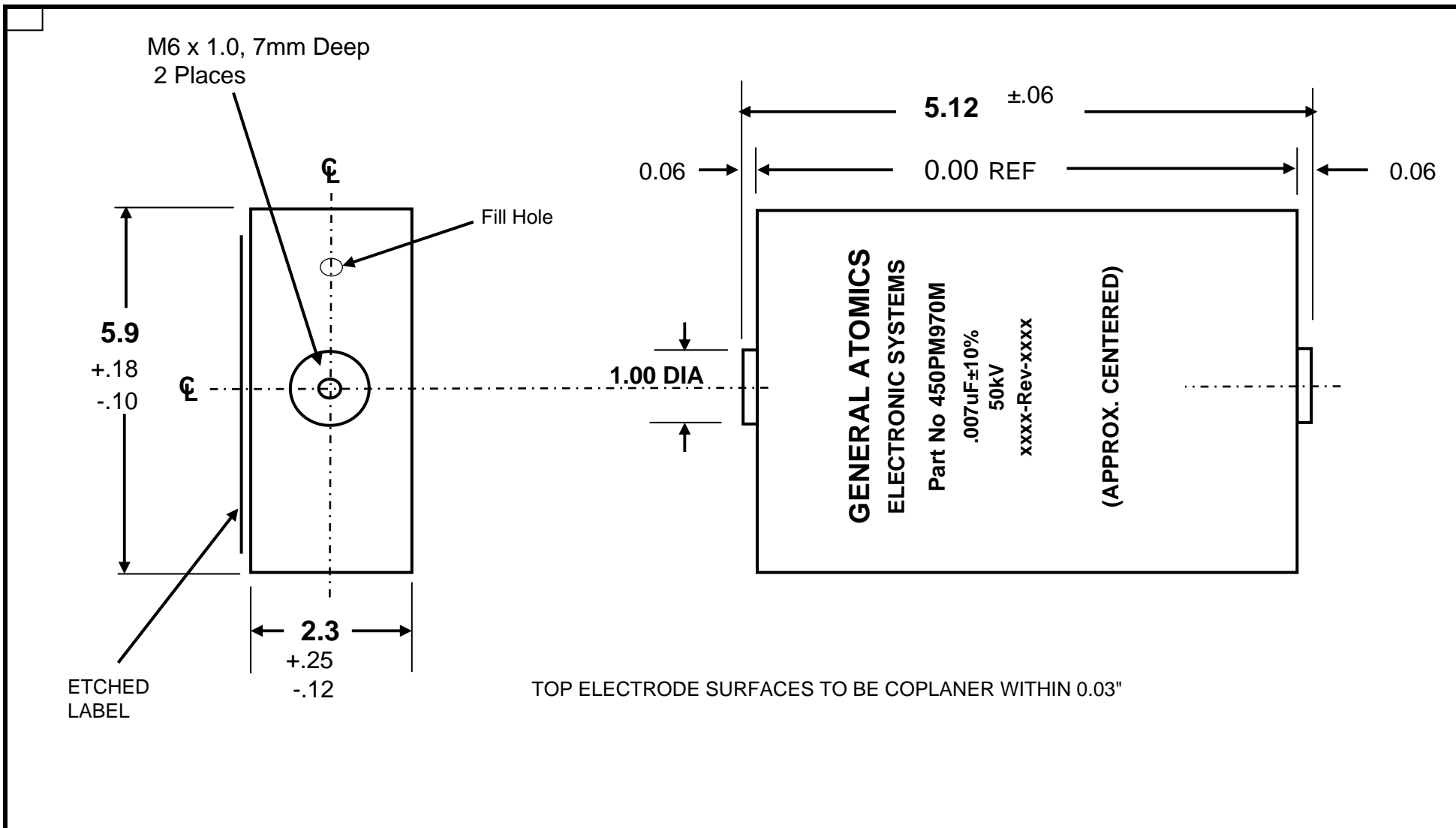
NOTES:


NOTE 1: LEAK TEST: 100 % test and inspection

NOTE 2: BTDP IMPREGNANT (non-PCB)

* R.T. = Room temperature (23 ± 7 °C)

SIZE A	FSCM 58307	DRAWING NUMBER 35869	REV LTR B
			SHEET 2B



		UNLESS OTHERWISE SPECIFIED DIMENSIONS ARE IN INCHES. TOLERANCES ARE: DECIMALS ANGLES .X ± .1 ± 2° .XX ± .03 .XXX ± .010 DO NOT SCALE DRAWING	CONTRACT NO.		 4949 GREENCRAIG LANE SAN DIEGO, CA 92123			
			APPROVALS	DATE			TITLE PART No. 450PM970M 0.007 µF ± 10 % , 50.0 kV	
		TREATMENT	DRAWN		SIZE	FSCM	DRAWING NUMBER	REV LTR
		FINISH	CHECKED					
NEXT ASSY	USED ON		ENGR Robert Cooper		A	58307	35869	B
APPLICATION		SIMILAR TO	DESIGN ACTIVITY					
		SPECIAL MARKING SYS	GOVERNMENT ACTIVITY		SCALE - NONE		1/17/07	SHEET 9B of 9