

CAPACITOR SPECIFICATION

PART NUMBERS: 35449 or 35449M

<u>PARAMETER</u>	<u>VALUE</u>	<u>UNITS</u>	<u>Q.A.</u>	<u>METHOD</u>
CAPACITANCE:	0.30	uF	100%	120 Hz, R.T.*
TOLERANCE:	± 10	%		
RATED VOLTAGE:	100	kV		
TEST VOLTAGE:	110 min. 112 max	kV	100%	60 sec HIPOT
RATED ENERGY:	2.0	kJ		
RATED VOLTAGE REVERSAL:	10	%		
MAX. VOLTAGE REVERSAL:	80 (FAULT)	%		
RATED PEAK CURRENT:	80	kA		
MAX PEAK CURRENT:	100 (FAULT)	kA		
MAX. OPERATING TEMP.	40	°C		
MIN. OPERATING TEMP.	-10	°C		
DESIGN LIFE AT RATED:	1.2E+04	charge / discharge cycles		
DC LIFE:	N/A	hours		
RELIABILITY AT LIFE:	90	%		
MAX. DISSIPATION FACTOR	0.35	%	100%	120 Hz, R.T.*
APPROX. INDUCTANCE	40	nH	SAMPLE	STANDING WAVE
MIN. INSULATION RESISTANCE	1000	Mohm-uF	SAMPLE	DECAY Vr / R.T.* / 120s / 120s
CASE STYLE:	PLASTIC CASE, DOUBLE ENDED			
BUSHING:	2 x 1/2 wide x 3" long Brass Rails			
ELECTRODE: 35449	1 RAIL with 2 ea 10-32 UNF-2B Holes on each End.			
ELECTRODE: 35449M	1 RAIL with 2 ea M5 x 0.8 Holes on each End.			
DIMENSIONS:	2.30 x 5.90 x 25.75	inches		
	58 x 150 x 654	mm		
APPROX. WEIGHT:	18.9	lbs		
	8.6	kg		

NOTES:

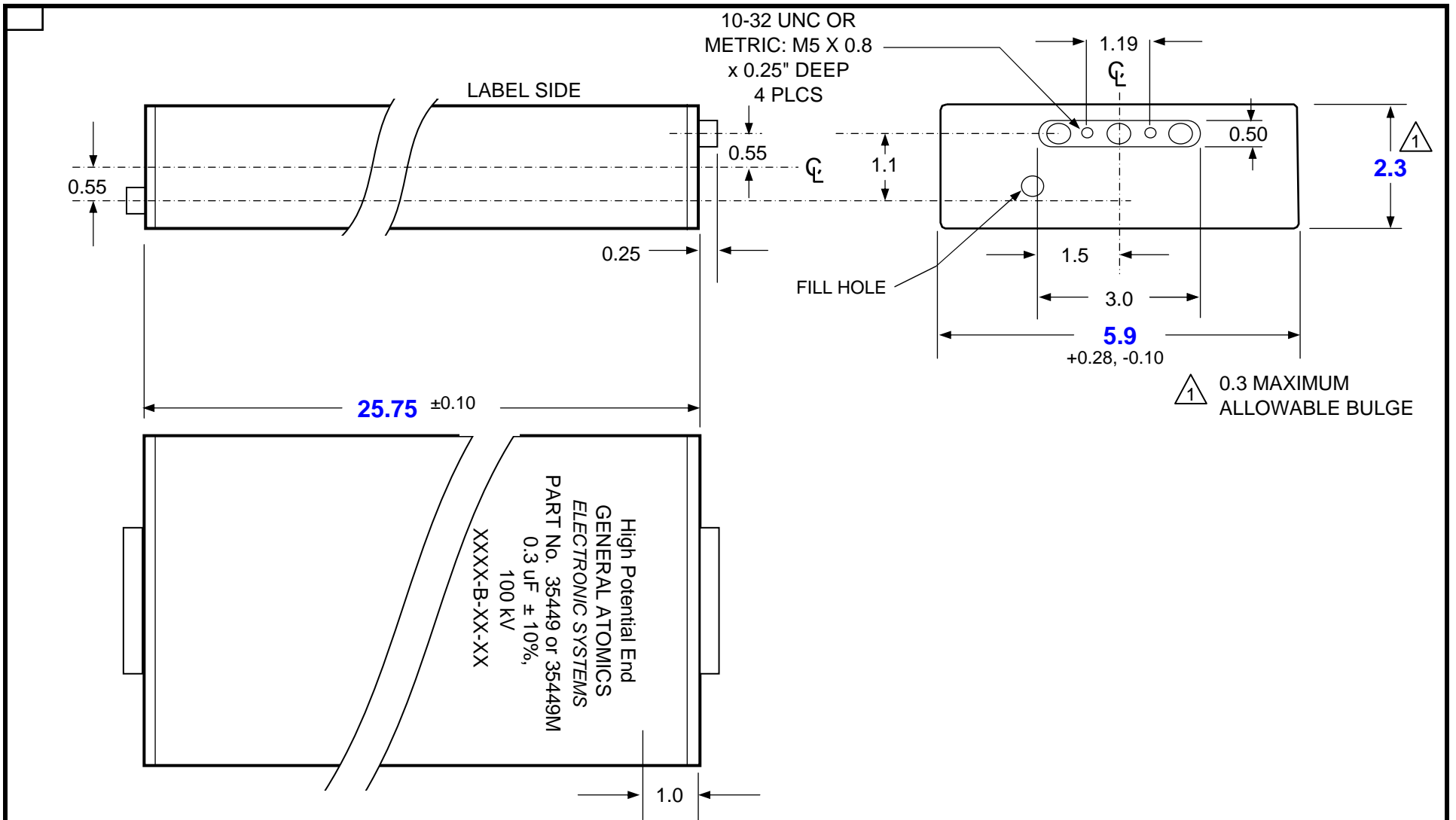
NOTE 1: LEAK TEST: 100 % test and inspection

NOTE 2: CASTOR OIL IMPREGNANT (non-PCB)

NOTE 2: DESIGN LIFE AT 99.5% RELIABILITY & 10% VOLTAGE REVERSAL 4400 C/D CYCLES


* R.T. = Room temperature (23 ± 7 °C)

	SIZE	FSCM	DRAWING NUMBER	REV
	A	58307	35449	B
	SHEET 2			



PRINT JUST THE ACTUAL PART NO. EITHER 35449 OR 35449M ON LABEL & CASE

TAPE PRINTED LABEL OVER ENGRAVED LABEL

		UNLESS OTHERWISE SPECIFIED DIMENSIONS ARE IN INCHES. TOLERANCES ARE: DECIMALS ANGLES .X ± .1 ± 2° .XX ± .03 .XXX ± .010 DO NOT SCALE DRAWING		CONTRACT NO.		 GENERAL ATOMICS ELECTRONIC SYSTEMS 4949 GREENCRAIG LANE SAN DIEGO, CA 92123	
		TREATMENT		APPROVALS			
		FINISH		DRAWN		TITLE	
NEXT ASSY		USED ON		CHECKED		CAPACITOR PART No. 35449 or 35449M 0.30 µF ± 10% , 100.0 kV	
APPLICATION		SIMILAR TO		ENGR		SIZE	
		SPECIAL MARKING SYS		DESIGN ACTIVITY		FSCM	
				GOVERNMENT ACTIVITY		DRAWING NUMBER	
						REV LTR	
						A 58307 35449 B	
						SCALE - NONE	
						DATE: 4/12/2007	
						SHEET 9 of 9	