

CAPACITOR SPECIFICATION

PART NUMBER: **32942**

<u>PARAMETER</u>	<u>VALUE</u>	<u>UNITS</u>	<u>Q.A.</u>	<u>METHOD</u>
CAPACITANCE:	250	uF		100% 120 Hz, R.T.*
TOLERANCE:	+/-10	%		
RATED VOLTAGE:	24.0	kV		
TEST VOLTAGE:	30.0	kV		100% 5 sec HIPOT
RATED ENERGY:	72.0	kJ		
RATED VOLTAGE REVERSAL:	60	%		
MAX. VOLTAGE REVERSAL:	80 (FAULT)	%		
RATED PEAK CURRENT:	12.5	kA		
MAX. PEAK CURRENT (FAULT):	45 (FAULT)	kA		
MAX. RMS CURRENT	40	Amps RMS		
MAX. OPERATING TEMP.	50	°C		
MIN. OPERATING TEMP.	0	°C		
DESIGN LIFE AT RATED:	1.9E+05	Charge / Discharge cycles		
DC LIFE:	4.6E+03	hours		
RELIABILITY AT LIFE:	90	%		
MAX. DISSIPATION FACTOR	2	%		100% 120 Hz, R.T.*
APPROX. INDUCTANCE	250	nH		SAMPLE STANDING WAVE
MIN. INSULATION RESISTANCE	1000	Mohm-uF		SAMPLE DECAY Vr / R.T.* / 120s / 120s

CASE STYLE: WELDED METAL CAN
BUSHING: 2 ea 25kV LOW PROFILE
ELECTRODE: M12 x 1.75 -6g
CASE TERMINAL: 4 ea M10 x 1.5 -6H x 12mm DEEP
DIMENSIONS: 13.5 x 16.0 x 32.0 inches
 343 x 406 x 813 mm

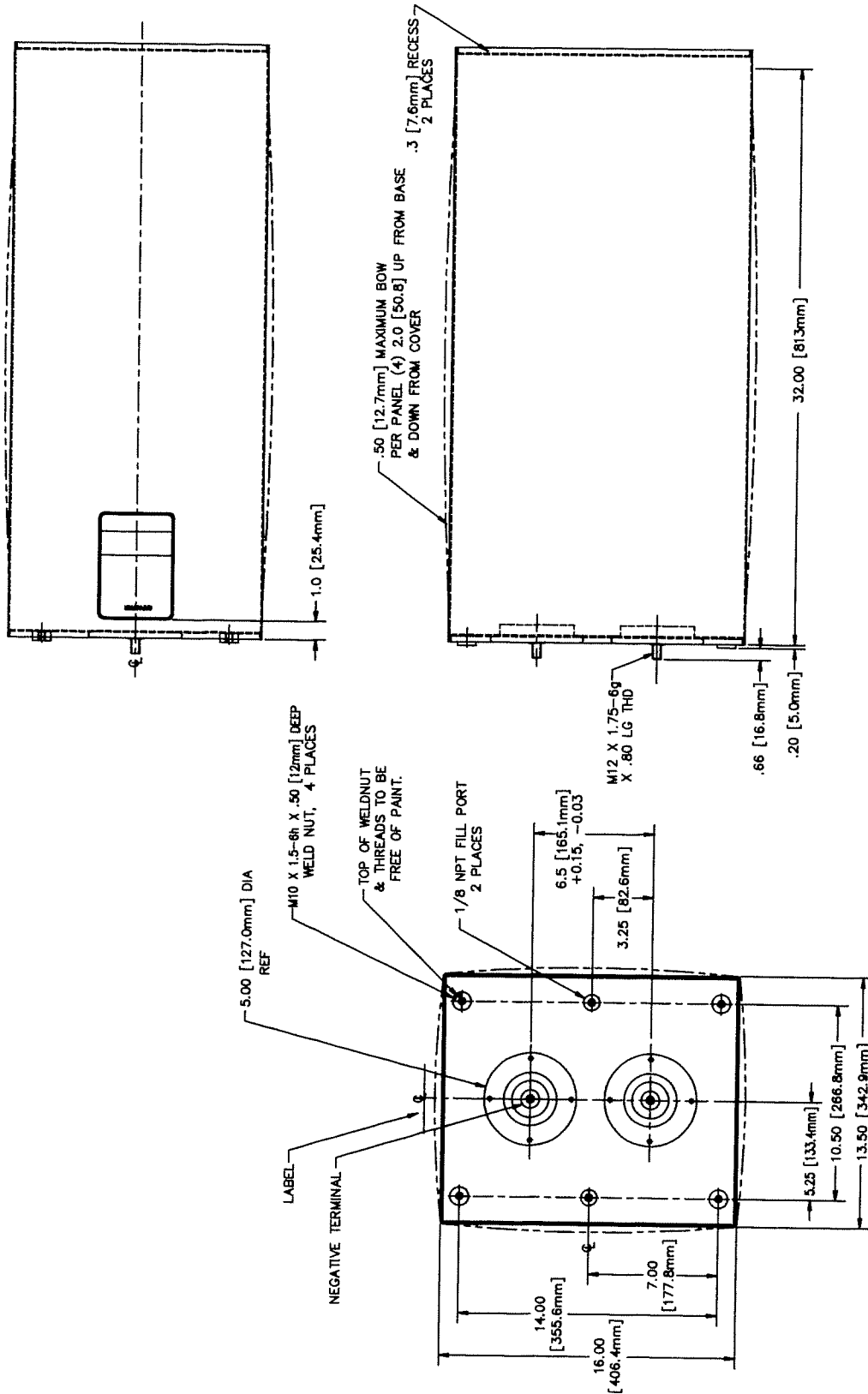
APPROXIMATE WEIGHT: 275.0 lbs
 125.0 kg

NOTES:


NOTE 1: Leak Test: 100% Test and Inspection
 NOTE 2: IMPREGNANT: RSO (non-PCB)

* R.T. = room temperature (23 ± 7 C)

	SIZE	FSCM	DRAWING NUMBER	REV LTR
	A	58307	32942	B
				SHEET 2



NOTES UNLESS OTHERWISE SPECIFIED:

 <p>4949 WREDCOURT LAL SAN DIEGO, CA 92123-1676</p>	<p>DO NOT SCALE DRAWING DIMENSIONS ARE IN INCHES TOLERANCES:</p>			SIZE	FSCM	DRAWING NUMBER	REV
	.X ±.1	.XX ±.03	.XXX ±.010	A	58307	32942	B
HOLE DIA UP TO .500	+0.005	-0.002	ANGLES ± 0° 30'	125			
HOLE DIA ABOVE .500	+0.010	-0.003	MACHINED SURFACES	SCALE 1/8			
						SHEET 9 OF 9	