



CAPACITOR SPECIFICATION

MODEL NUMBER: **32922**

PARAMETER	VALUE	UNITS	Q.A.	METHOD
CAPACITANCE:	77.5	uF	100%	120 Hz, R.T.*
TOLERANCE:	+10 -5	%		
RATED VOLTAGE:	31	Vdc		
TEST VOLTAGE:	32.5	Vdc	100%	60 sec HIPOT
RATED ENERGY:	37	kJ		
RATED VOLTAGE REVERSAL:	10	%		
MAX. VOLTAGE REVERSAL:	80	%		
MAX. PEAK CURRENT:	10	kA		
MAX. CONTINUOUS REP RATE:		ppm		
MAX. RMS CURRENT	17	A		
MAX. OPERATING TEMP.	65	°C		
MIN. OPERATING TEMP.	-20	°C		
DESIGN LIFE AT RATED:	1.8E+04	See Note 3		charge / discharge cycles
DC LIFE:	74			hours
RELIABILITY AT LIFE:	90			%
MAX. DISSIPATION FACTOR	1.0	%	100%	120 Hz, R.T.*
APPROX. INDUCTANCE	1000	nH		SAMPLE STANDING WAVE
MIN. INSULATION RESISTANCE	1000	Mohm-uF		SAMPLE DECAY Vr / R.T.* / 120s / 120s
CASE STYLE:	RECTANGULAR WELDED STEEL			
BUSHING:	2 ea 50 kV Low Profile			
ELECTRODE STUD:	1/2-13 UNC-2A			
CASE TERMINAL	4 ea 3/8-16 UNC x 0.5 DEEP			
DIMENSIONS:	7.0 x 15.5 x 27.5	inches		
	178 x 394 x 699	mm		
WEIGHT:	151	lbs		
	69	kg		

NOTES:

NOTE 1: LEAK TEST: 100 % test and inspection

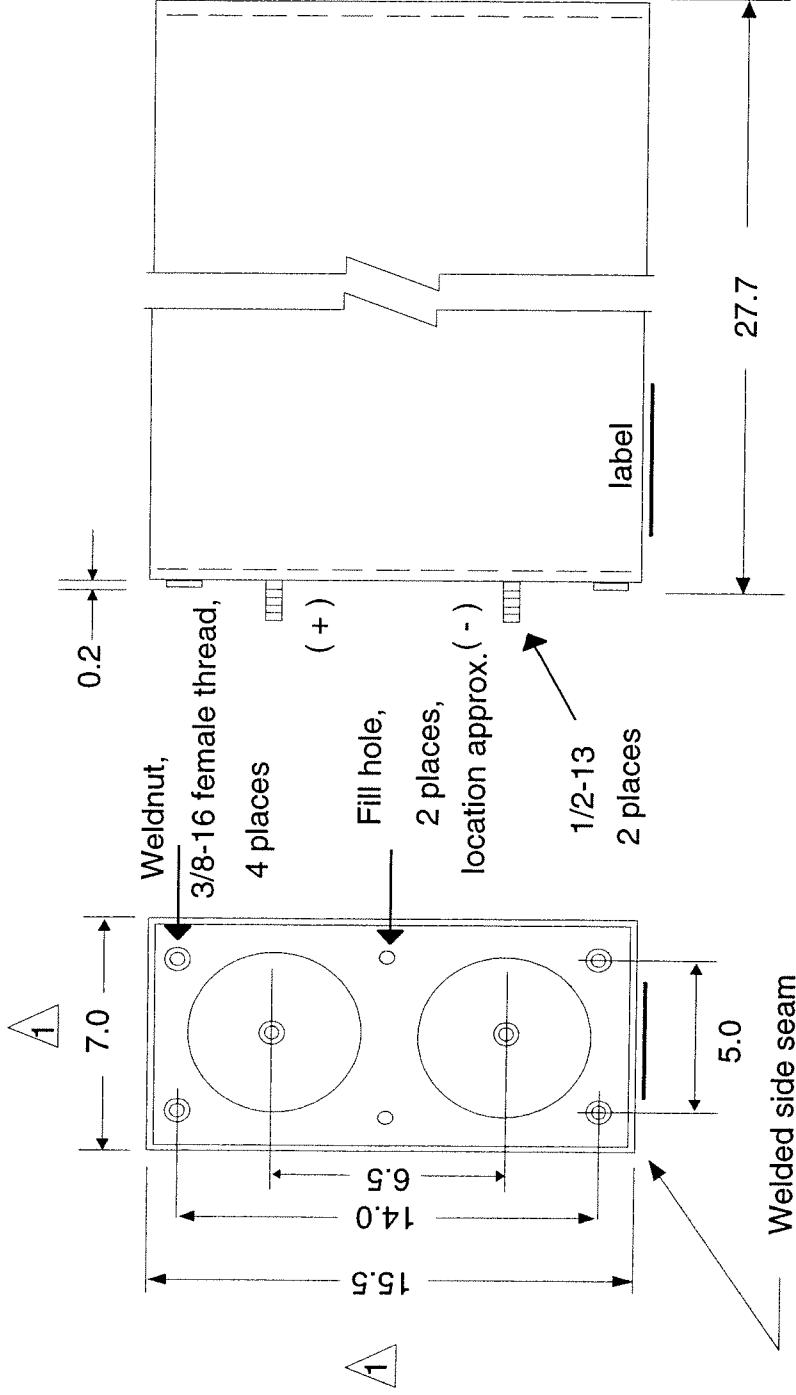
NOTE 2: RSO IMPREGNANT (non-PCB)

NOTE 3: Design Life at 26 kV > 250,000 Cycles

*R.T. = room temperature

	SIZE A	FSCM 58307	DRAWING NUMBER 32922	REV LTR A
			SHEET	2

⚠ Dimensions held 2" up from base and down from top. 0.25" bow maximum per panel.



GENERAL ATOMICS
Energy Products

4949 GREENCRAIG LANE
SAN DIEGO CA. 92123

TITLE OUTLINE DRAWING

CAPACITOR, PART No. 32922
77.5 uF +10 -5 %, 31 kV

SIZE **A** FSCM DRAWING NUMBER **32922** REV LTR **A**

SCALE NONE DATE PAGE 13 of 13

CONTRACT NUMBER

DATE

PREPARED

CHECKED

ENGINEER

DESIGN ACTIVITY APPROVAL

GOVERNMENT ACTIVITY APPROVAL

DO NOT SCALE DRAWING
UNLESS OTHERWISE SPECIFIED
DIMENSIONS ARE IN INCHES
.X ± .1 .XX ± .03 .XXX ± .010

PROJECT
MANAGER

Joel B. Ennis

PROJECT
ENGINEER

APPROVED

CHECKED
BY

DRAWN
BY

Joel B. Ennis

NEXT ASSY USED ON APPLICATION