



# CAPACITOR SPECIFICATION

**PART NUMBER: 32896**

<u>PARAMETER</u>	<u>VALUE</u>	<u>UNITS</u>	<u>Q.A.</u>	<u>METHOD</u>
CAPACITANCE:	2.60	uF	100%	120 Hz, R.T.*
TOLERANCE:	+10 , -5	%		
RATED VOLTAGE:	100	kV		
HIGH VOLTAGE TEST:	110	kV	100%	180sec Hipot before Burn-in
BURN-IN SHOTS:	100	kV	100%	>= 70% Voltage Reversal, > 170kA
SECOND HIGH VOLTAGE TEST:	110	kV	100%	60sec Hipot after Burn-in Shots
RATED ENERGY:	13.00	kJ		
RATED VOLTAGE REVERSAL:	35	%		
MAX. VOLTAGE REVERSAL:	80	%		
RATED PEAK CURRENT:	170 Normal @ 85kV	kA		
MAX. PEAK CURRENT:	300 Fault	kA		Single Event
MAX. OPERATING TEMP.	40	°C		
MIN. OPERATING TEMP.	-10	°C		
DESIGN LIFE AT RATED:	1.0E+04	charge / discharge cycles		
DC LIFE:	2.5E+01	hours		
RELIABILITY AT LIFE:	90	%		
MAX. DISSIPATION FACTOR	0.60	%	100%	120 Hz, R.T.*
APPROX. INDUCTANCE	30	nH	SAMPLE	STANDING WAVE
MIN. INSULATION RESISTANCE	750	Mohm-uF	SAMPLE	DECAY Vr / R.T.* / 120s / 120s
CASE STYLE:	WELDED 304 SST CAN			
BUSHING:	1 ea SCYLLAC; 100kV Low Profile With SST Coaxial Return Ground Ring.			
ELECTRODE:	1.0-14 UNS 2B TAP			
DIMENSIONS:	11 x 14 x 25.0	inches		
	279 x 356 x 635	mm		
APPROX. WEIGHT:	239	lbs		
	108	kg		

**NOTES:**

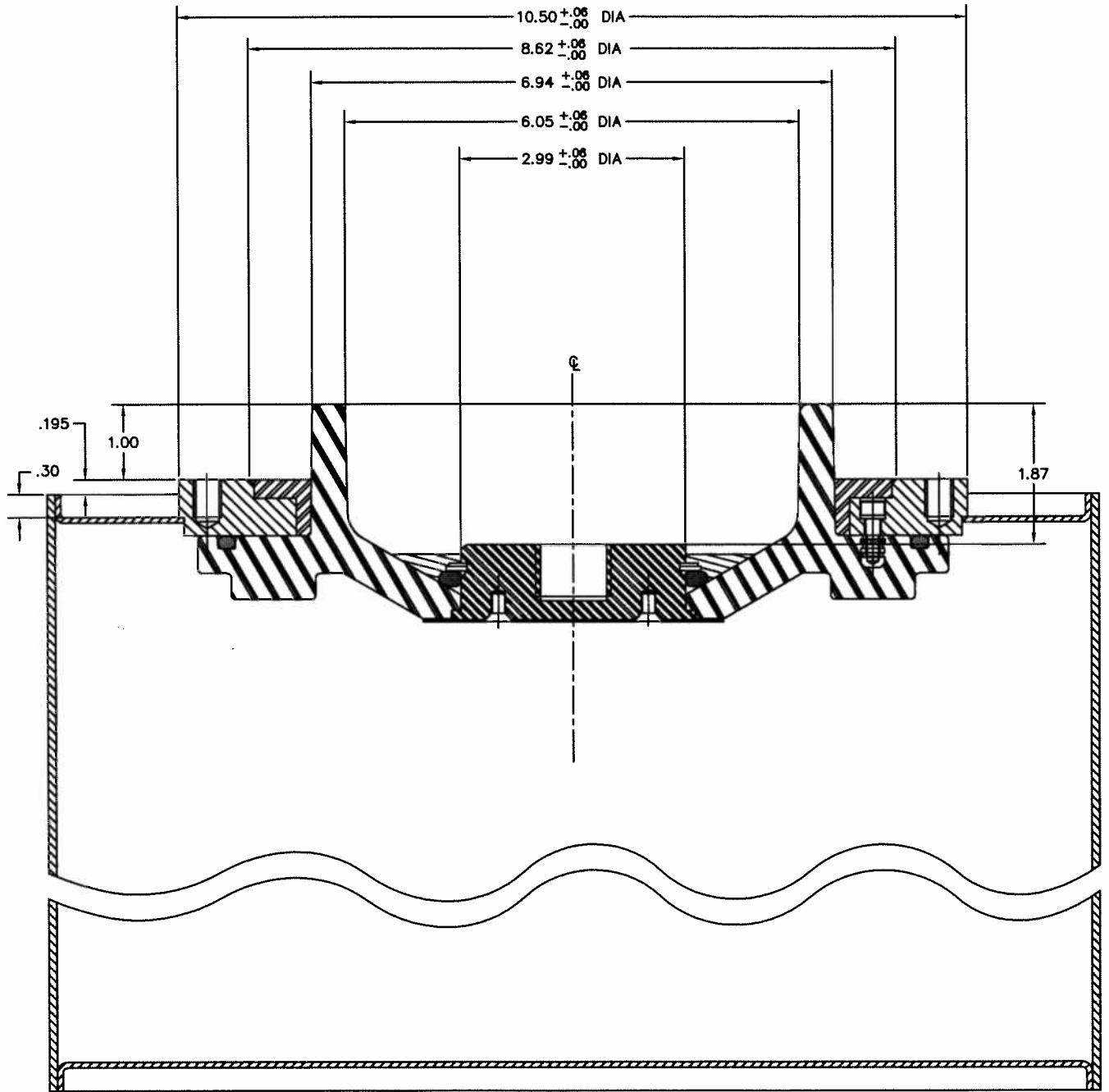
**NOTE 1:** LEAK TEST: 100 % test and inspection

**NOTE 2:** Castor Oil IMPREGNANT (non-PCB)

\*R.T. = ROOM TEMPERATURE, 23 ± 7°C

	SIZE <b>A</b>	FSCM <b>58307</b>	DRAWING NUMBER <b>32896</b>	REV LTR <b>J</b>
			SHEET	<b>2</b>





SECTION A-A

<p>4948 GREENCRAIG LANE SAN DIEGO, CA 92123-1508</p>	<p><b>DO NOT SCALE DRAWING</b> DIMENSIONS ARE IN INCHES TOLERANCES:</p>			<p>SIZE A</p>	<p>FSCM 58307</p>	<p>DRAWING NUMBER 32896</p>	<p>REV J</p>
	<p>.X <math>\pm</math>.1    .XX <math>\pm</math>.03    .XXX <math>\pm</math>.010</p> <p>HOLE DIA UP TO .500 <math>\pm</math>.005 HOLE DIA ABOVE .500 <math>\pm</math>.010</p>	<p>ANGLES <math>\pm</math> 0° 30'</p> <p>MACHINED SURFACES <input checked="" type="checkbox"/></p>	<p>SCALE 1/3</p>	<p>SHEET 11 OF 11</p>			