

## CAPACITOR SPECIFICATION

PART NUMBER:      **32547**

<u>PARAMETER</u>	<u>VALUE</u>	<u>UNITS</u>	<u>Q.A.</u>	<u>METHOD</u>
CAPACITANCE:	826	μF	100%	120 Hz, R.T.*
TOLERANCE:	+10, -0	%		
RATED VOLTAGE:	11.0	kVdc		
TEST VOLTAGE:	12.0	kVdc	100%	60 sec HIPOT
RATED ENERGY:	50.0	kJ		
RATED VOLTAGE REVERSAL:	10	%		
MAX. VOLTAGE REVERSAL:	40 (FAULT)	%		
RATED PEAK CURRENT:	100	kA		
MAX. PEAK CURRENT:	125 (FAULT)	kA		
MAX. RMS CURRENT	50	A		
MAX. OPERATING TEMP.	40	°C		
MIN. OPERATING TEMP.	-10	°C		
DESIGN LIFE AT RATED:	3.0E+03	charge / discharge cycles		
DC LIFE:	100	hours		
RELIABILITY AT LIFE:	90	%		
MAX. DISSIPATION FACTOR	0.60	%	100%	120 Hz, R.T.*
APPROX. INDUCTANCE	40	nH	SAMPLE	STANDING WAVE
MIN. INSULATION RESISTANCE	1000	Mohm-uF	SAMPLE	DECAY Vr / R.T.* / 120s / 120s
CASE STYLE:	WELDED STEEL CAN			
BUSHING:	1 ea 25 kV LOW PROFILE			
ELECTRODE STUD:	M12 x 1.75 - 6g			
CASE TERMINAL:	4 ea M10 x 1.5 - 6H x 12 mm Deep			
DIMENSIONS:	12 x 16 x 27.25	inches		
	305 x 406 x 692	mm		
APPROXIMATE WEIGHT:	369	lbs		
	168	kg		

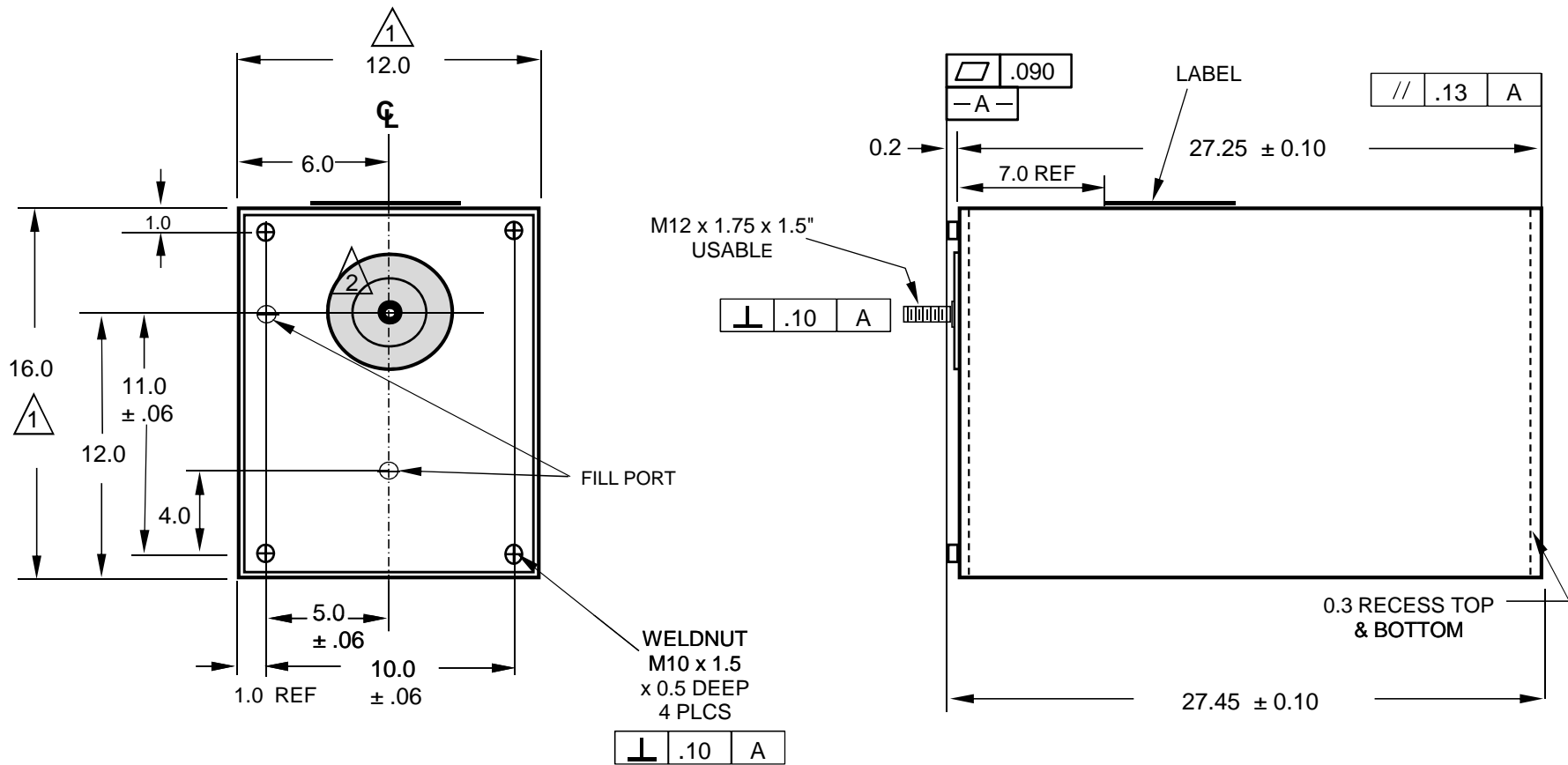
**NOTES:**

**NOTE 1:** LEAK TEST: 100 % test and inspection


**NOTE 2:** CO IMPREGNANT (non-PCB)

\* R.T. = Room temperature (23 ± 7 °C)

	SIZE	FSCM	DRAWING NUMBER	REV
	<b>A</b>	<b>58307</b>	<b>32547</b>	<b>B</b>
	<b>SHEET 2</b>			



NOTES 1: DIMENSIONS HELD 2.0 UP FROM BASE & DOWN FROM COVER. 0.38 MAX BOW PER PANEL.  
 2: STAMP BUSHING: "20 FT.- LBS. MAX"

		UNLESS OTHERWISE SPECIFIED DIMENSIONS ARE IN INCHES. TOLERANCES ARE: DECIMALS .X ± .1 .XX ± .03 .XXX ± .010 ANGLES ± 2° DO NOT SCALE DRAWING	CONTRACT NO.		 <b>GENERAL ATOMICS ELECTRONIC SYSTEMS</b> 4949 GREENCRAIG LANE SAN DIEGO, CA 92123				
			APPROVALS						DATE
		TREATMENT	DRAWN		SIZE		FSCM	DRAWING NUMBER	B
NEXT ASSY	USED ON	FINISH	ENGR JEG/		A	58307	32547		
APPLICATION		SIMILAR TO	SPECIAL MARKING SYS		SCALE - NONE		DATE: 04/20/92	SHEET 9 of 9	
				GOVERNMENT ACTIVITY					